



ANLY CONTROLLER

PU-NC-□ CONTROLLER UNIT



CHARACTERISTIC :

- Wide operating voltage range in a single unit, from AC/DC 100V~240V
- Proximity and photoelectric switches power supply controller
- Use isolated switching power supply with stabilized, output source is DC 12V 250mA or DC 24V 150mA
- 1C (SPDT) output contact with 5A capacity

SPECIFICATION :

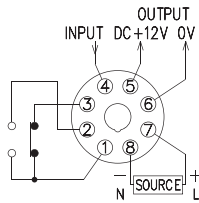
Operating voltage	AC/DC(V) : 100-240
Allowable operating voltage range	85~110% of rated operating voltage
Rated frequency	50 / 60 Hz
Contact rating	250VAC 5A (resistive load)
Reset time	- - - -
Power consumption	Approx. 2VA
Life	Mechanical: 5,000,000 times Electrical: 100,000 times
Ambient temperature	-10 ~ +50°C (without condensation & freezing)
Ambient humidity	MAX 85%RH (without condensation)
Altitude	MAX 2000m
Weight	Approx. 97g

TYPE SELECTION :

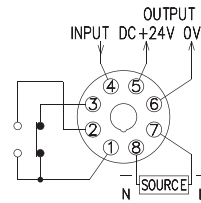
Type	PU-NC-1	PU-NC-2
Output voltage/current	DC 12V / 250mA	DC 24V / 150mA
Connet proximity	P-N type	
Active	Hi or Low active	

CONNECTION :

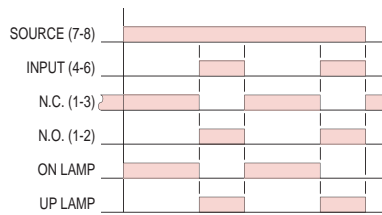
PU-NC-1



PU-NC-2

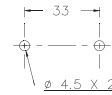
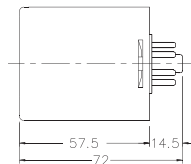
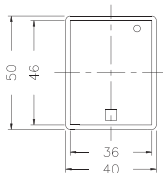


TIMING CHART :



DIMENSIONS : (mm)

N type(Surface Mounting): Using PF085A Socket & FH-3



Tolerance: ± 0.1

ANLY ELECTRONICS CO., LTD.

<http://www.anly.com.tw>

TAIWAN MAIN OFFICE : ANLY ELECTRONICS CO., LTD.

No.19, Lane 202, Fushou St., Xinzhuang Dist., New Taipei City 242, Taiwan
 TEL: +886-2-2996-3202 FAX: +886-2-2996-2017

HONG KONG OFFICE : ANLY ELECTRONICS (HK) LTD.

Flat K, 13/F, Edward Mansion, 141 Prince Edward Road W., Kowloon, Hong Kong
 TEL: +852-2397-2505 FAX: +852-2397-6080

CHINA OFFICE : ANLY TECHNOLOGY (WUXI) CO., LTD.

2F, Building A, Plot 1, No. 28, Zhanhong Rd., Xinwu Dist., Wuxi, Jiangsu, P.R.China
 TEL: +86-510-85304801-3

MALAYSIA OFFICE : JUSTY ELECTRONICS (M) SDN. BHD.

No.1, Jalan 6/89B, Kawasan Perindustrian Trisegi, Batu 3 1/2 Off Jalan Sungei Besi, 57100 Kuala Lumpur, Malaysia
 TEL: +60-3-7983-5758 FAX: +60-3-7981-5052

INDONESIA OFFICE : PT. ANLY ELECTRONICS INDONESIA

Jl. Pangeran Jayakarta 117/B9, Jakarta Pusat, 10730 Indonesia
 TEL: +62-21-624-8436 FAX: +62-21-626-1228